

CERVICAL FUSION
CAGE
SYSTEM

BEST TREATMENT BRINGS WONDERFUL LIVES

Betta Medical Technology (Wuxi) Co., Ltd.



Add : Zone B, 1st Floor of No.7 Building
Area C, No.1699 Huishan Ave Huis-
han Economic Development Zone
214174 Wuxi, Jiangsu Province
PEOPLE'S REPUBLIC OF CHINA

Tel: 0086 (510) 83588827

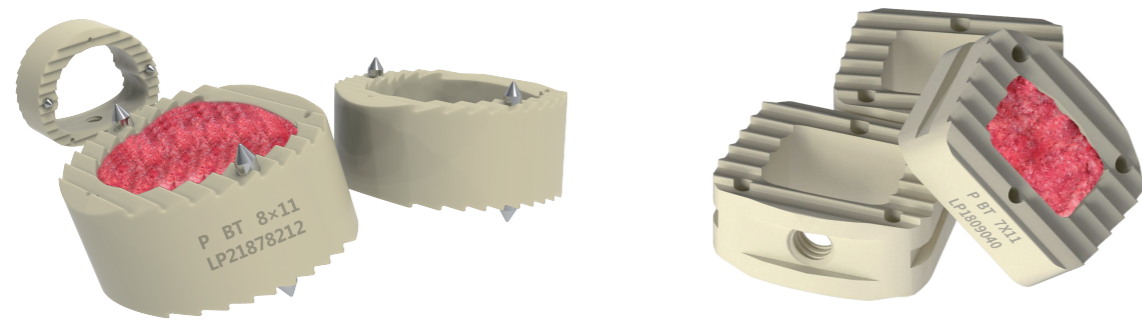
CERVICAL FUSION
CAGE
SYSTEM



BettaTech[®]

Introduction

For lesions of the cervical spine that require segmental fusion
 Degenerative disc disease and spinal instability
 Revision surgery after simple discectomy
 C1 Cage is not recommended to be used alone, it should be used in conjunction with the anterior cervical plate system



Indications

- Surface denticles, providing initial stability after implantation
- Convex design for endplate anatomy
- Sufficient bone graft space
- Development line for easy image observation
- C2 Cage Use Self-stable structure design , increase the stability of the cage

Features & Benefits

- Using PEEK material, a variety of models and specifications are available
- Convex design conforms to the physiological curvature of the endplate
- Tantalum metal developing line, easy to observe
- Large bone graft window
- Surface anti-backward design
- Blunt tip design for easy implantation

Implants Ordering Information

Cervical Intervertebral Cage

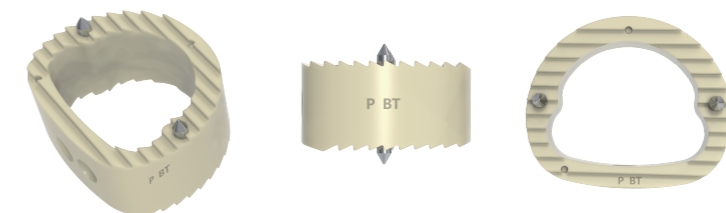
P/N	Description(mm)	Material
31600511	5×11	PEEK
31600611	6×11	PEEK
31600711	7×11	PEEK
31600811	8×11	PEEK
31600911	9×11	PEEK
31600011	10×11	PEEK
31600111	11×11	PEEK
31600211	12×11	PEEK



(C1)

P/N	Description(mm)	Material
33100511	5×11	PEEK
33100611	6×11	PEEK
33100711	7×11	PEEK
33100811	8×11	PEEK
33100911	9×11	PEEK
33101011	10×11	PEEK
33101111	11×11	PEEK
33260512	5×12	PEEK
33260612	6×12	PEEK
33260712	7×12	PEEK
33260812	8×12	PEEK
33260912	9×12	PEEK

P/N	Description(mm)	Material
33261012	10×12	PEEK
33261112	11×12	PEEK
33261212	12×12	PEEK
33270514	5×14	PEEK
33270614	6×14	PEEK
33270714	7×14	PEEK
33270814	8×14	PEEK
33270914	9×14	PEEK
33271014	10×14	PEEK
33271114	11×14	PEEK
33271214	12×14	PEEK



(C2)

Note: The sample picture is only for reference , please take practicality as standard